

Memorize the Following Scales: C Major / G Major / D Major / A Major / F Major

Junior Clinic Violin Scales

*** C Major



*** G Major



*** D Major



*** A Major



*** F Major



Bb Major



Eb Major



At the audition, you will be asked to play 2 of these 5 scales (from Memory).

These 2 scales will be announced the day before the audition.

Each note in the scale should be played 1 time.

Tempo: Quarter note = 80-100 bpm = (for both scales)

Junior Clinic Viola Scales

*** C Major

Musical notation for the C Major scale in 4/4 time. The scale starts on C4 (middle C) and ascends to C5. The notes are: C4, D4, E4, F4, G4, A4, B4, C5. The scale then descends: B4, A4, G4, F4, E4, D4, C4. The piece ends with a whole note C4.

*** G Major

Musical notation for the G Major scale in 4/4 time. The scale starts on G4 and ascends to G5. The notes are: G4, A4, B4, C5, D5, E5, F5, G5. The scale then descends: F5, E5, D5, C5, B4, A4, G4. The piece ends with a whole note G4.

*** D Major

Musical notation for the D Major scale in 4/4 time. The scale starts on D4 and ascends to D5. The notes are: D4, E4, F#4, G4, A4, B4, C5, D5. The scale then descends: C5, B4, A4, G4, F#4, E4, D4. The piece ends with a whole note D4.

*** A Major

Musical notation for the A Major scale in 4/4 time. The scale starts on A3 and ascends to A4. The notes are: A3, B3, C#4, D4, E4, F#4, G#4, A4. The scale then descends: G#4, F#4, E4, D4, C#4, B3, A3. The piece ends with a whole note A3.

*** F Major

Musical notation for the F Major scale in 4/4 time. The scale starts on F3 and ascends to F4. The notes are: F3, G3, A3, B3, C4, D4, E4, F4. The scale then descends: E4, D4, C4, B3, A3, G3, F3. The piece ends with a whole note F3.

Bb Major

Musical notation for the Bb Major scale in 4/4 time. The scale starts on Bb3 and ascends to Bb4. The notes are: Bb3, C4, D4, Eb4, F4, G4, Ab4, Bb4. The scale then descends: Ab4, G4, F4, Eb4, D4, C4, Bb3. The piece ends with a whole note Bb3.

Eb Major

Musical notation for the Eb Major scale in 4/4 time. The scale starts on Eb3 and ascends to Eb4. The notes are: Eb3, F3, G3, Ab3, Bb3, C4, D4, Eb4. The scale then descends: D4, C4, Bb3, Ab3, G3, F3, Eb3. The piece ends with a whole note Eb3.

At the audition, you will be asked to play 2 of these 5 scales (from Memory).
These 2 scales will be announced the day before the audition.
Each note in the scale should be played 1 time.
Tempo: Quarter note = 80-100 bpm = (for both scales)

Memorize the Following Scales: C Major / G Major / D Major / A Major / F Major

At the audition, you will be asked to play 2 of these 5 scales (from Memory). These 2 scales will be announced the day before the audition. Each note should be played 1 time. Tempo: Quarter note = 80-100 bpm (for both scales)

Junior Clinic Cello Scales

***C Major

Musical notation for C Major scale in bass clef, 4/4 time signature. The scale consists of 12 quarter notes: C2, C3, D3, E3, F3, G3, A3, B3, C4, B3, A3, G3, F3, E3, D3, C2.

***G Major

Musical notation for G Major scale in bass clef, 4/4 time signature. The scale consists of 12 quarter notes: G2, A2, B2, C3, D3, E3, F#3, G3, A3, B3, C4, B3, A3, G3, F#3, E3, D3, C3, G2.

***D Major

Musical notation for D Major scale in bass clef, 4/4 time signature. The scale consists of 12 quarter notes: D2, E2, F#2, G2, A2, B2, C3, D3, E3, F#3, G3, A3, B3, C4, B3, A3, G3, F#3, E3, D3, C3, D2.

***A Major

Musical notation for A Major scale in bass clef, 4/4 time signature. The scale consists of 12 quarter notes: A2, B2, C#2, D2, E2, F#2, G2, A2, B2, C#2, D2, E2, F#2, G2, A2, B2, C#2, D2, E2, F#2, G2, A2.

***F Major

Musical notation for F Major scale in bass clef, 4/4 time signature. The scale consists of 12 quarter notes: F2, G2, A2, B2, C3, D3, E3, F3, G3, A3, B3, C4, B3, A3, G3, F3, E3, D3, C3, F2.

Bb Major

Musical notation for Bb Major scale in bass clef, 4/4 time signature. The scale consists of 12 quarter notes: Bb2, C3, D3, Eb3, F3, G3, Ab3, Bb3, C4, Bb3, Ab3, G3, F3, Eb3, D3, C3, Bb2.

Eb Major

Musical notation for Eb Major scale in bass clef, 4/4 time signature. The scale consists of 12 quarter notes: Eb2, F2, G2, Ab2, Bb2, C3, D3, Eb3, F3, G3, Ab3, Bb3, C4, Bb3, Ab3, G3, F3, Eb3, D3, C3, Eb2.

Junior Clinic Bass Scales

***C Major



***G Major



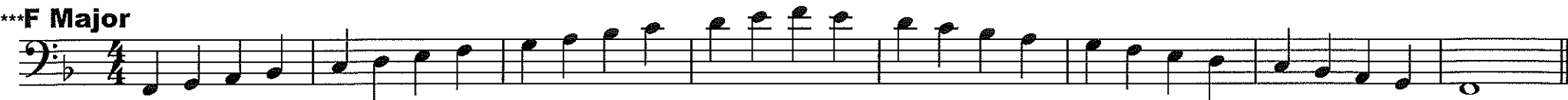
***D Major



***A Major



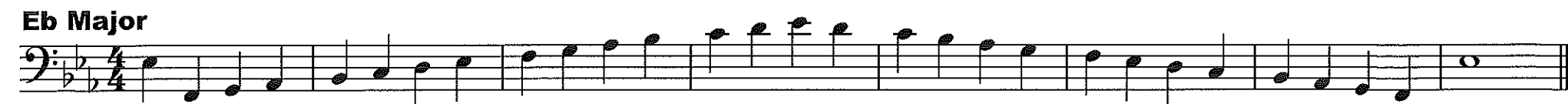
***F Major



Bb Major



Eb Major



At the audition, you will be asked to play 2 of these 5 scales (from Memory).
These 2 scales will be announced the day before the audition.
Each note in the scale should be played 1 time.
Tempo: Quarter note = 80-100 bpm = (for both scales)