

# ETSBOA All East 11/12 Etude

Rotation 2

Joseph T. Spaniola

$\text{♩} = 63$ , *Dolcissimo* - Lyrical

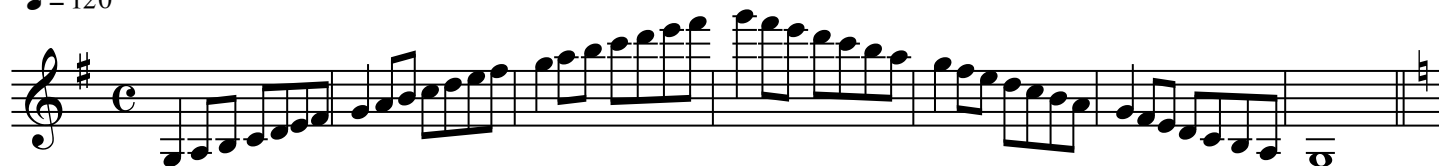
Musical notation for the first section of the etude, measures 1-7. The music is in treble clef with a key signature of three sharps (F#, C#, G#) and a 4/4 time signature. Measure 1 starts with a piano (*p*) dynamic. Measures 4, 5, and 6 contain triplet markings. Measure 7 has a mezzo-forte (*mf*) dynamic. The section concludes with a piano (*p*) dynamic.

$\text{♩} = 112$ , *Fiero* - Technical

Musical notation for the second section of the etude, measures 1-25. The music is in treble clef with a key signature of one flat (B $\flat$ ) and a 6/8 time signature. Measure 1 starts with a mezzo-forte (*mf*) dynamic. Measures 7, 13, and 19 have dynamic markings of *mf*, *mp*, and *f* respectively. The section concludes with a mezzo-forte (*mf*) dynamic. The notation includes various articulations such as accents and slurs.

# Bb Clarinet Scales 11-12

♩ = 120



Bb Clarinet Scales 11-12

