

Flute

Commissioned by the East Tennessee School Band and Orchestra Association

ETSBOA All East 11/12 Etude

Rotation 2

Joseph T. Spaniola

♩ = 60, Cantabile e rubato - Lyrical

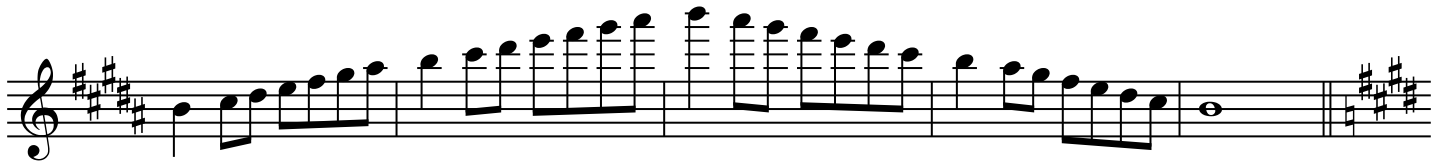
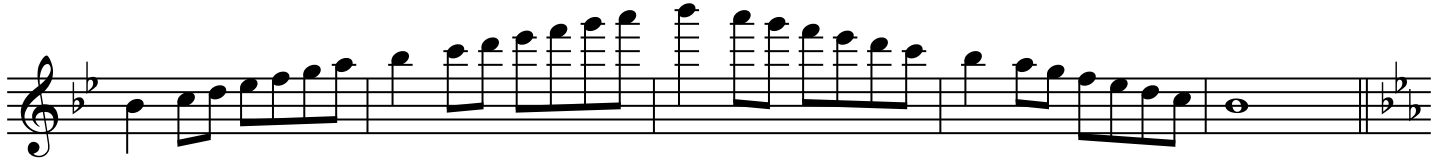
Musical score for the first section of the etude, measures 1-6. The music is in 4/4 time with a key signature of one flat (B-flat major). It features a lyrical melody with various articulations and dynamics. Measure 1 starts with a quarter note G4, followed by eighth notes. Measure 2 has a quarter note G4, a quarter note F4, and a quarter note E4. Measure 3 has a quarter note D4, a quarter note C4, and a quarter note B3. Measure 4 has a quarter note B3, a quarter note A3, and a quarter note G3. Measure 5 has a quarter note F3, a quarter note E3, and a quarter note D3. Measure 6 has a quarter note C3, a quarter note B2, and a quarter note A2. Dynamics include *p* (piano) and *mp* (mezzo-piano). There are triplets and sixteenth notes throughout.

♩ = 120, Con Brio - Technical

Musical score for the second section of the etude, measures 7-29. The music is in 4/4 time with a key signature of three flats (D-flat major). It is a technical section characterized by rapid sixteenth-note passages and slurs. Measure 7 starts with a quarter note G4, followed by eighth notes. Measure 8 has a quarter note F4, a quarter note E4, and a quarter note D4. Measure 9 has a quarter note C4, a quarter note B3, and a quarter note A3. Measure 10 has a quarter note G3, a quarter note F3, and a quarter note E3. Measure 11 has a quarter note D3, a quarter note C3, and a quarter note B2. Measure 12 has a quarter note A2, a quarter note G2, and a quarter note F2. Measure 13 has a quarter note E2, a quarter note D2, and a quarter note C2. Measure 14 has a quarter note B1, a quarter note A1, and a quarter note G1. Measure 15 has a quarter note F1, a quarter note E1, and a quarter note D1. Measure 16 has a quarter note C1, a quarter note B0, and a quarter note A0. Measure 17 has a quarter note G0, a quarter note F0, and a quarter note E0. Measure 18 has a quarter note D0, a quarter note C0, and a quarter note B-1. Measure 19 has a quarter note A-1, a quarter note G-1, and a quarter note F-1. Measure 20 has a quarter note E-1, a quarter note D-1, and a quarter note C-1. Measure 21 has a quarter note B-1, a quarter note A-1, and a quarter note G-1. Measure 22 has a quarter note F-1, a quarter note E-1, and a quarter note D-1. Measure 23 has a quarter note C-1, a quarter note B-1, and a quarter note A-1. Measure 24 has a quarter note G-1, a quarter note F-1, and a quarter note E-1. Measure 25 has a quarter note D-1, a quarter note C-1, and a quarter note B-1. Measure 26 has a quarter note A-1, a quarter note G-1, and a quarter note F-1. Measure 27 has a quarter note E-1, a quarter note D-1, and a quarter note C-1. Measure 28 has a quarter note B-1, a quarter note A-1, and a quarter note G-1. Measure 29 has a quarter note F-1, a quarter note E-1, and a quarter note D-1. Dynamics include *f* (forte) and *più f* (pianissimo). There are slurs and accents throughout.

Flute Scales 11-12

♩ = 120



Flute Scales

