

Jr. Clinic Clarinet "Even"

Lyrical

♩=84

mp *cresc.*

f 3 3 *tr*

Detailed description: The Lyrical section consists of two staves. The top staff is in 4/4 time with a tempo of 84. It begins with a melody starting on a dotted quarter note, followed by eighth notes, and a half note. The dynamics are marked *mp* and *cresc.*. The bottom staff provides a bass line with eighth notes, including two triplet markings (3) and a trill (tr) on a dotted quarter note.

Technical

♩=85

mp *f*

mp

Detailed description: The Technical section consists of two staves in 4/4 time with a tempo of 85. The top staff features a fast melody of eighth notes, starting with a *mp* dynamic and ending with a *f* dynamic. The bottom staff provides a bass line with eighth notes, starting with a *mp* dynamic.

ETSBOA Lower Area Junior Clinic Scales

Clarinet & Bass Clarinet

Gr. 8-9

-These are the minimum expectations for auditions-

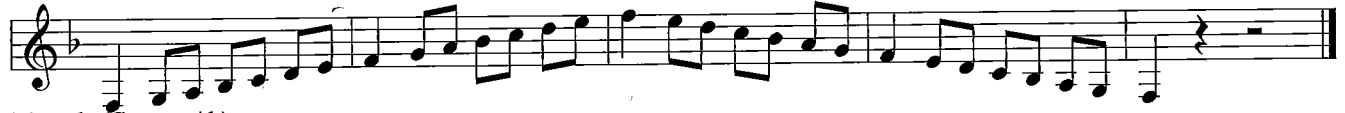
G scale (Concert F)



C scale (Concert Bb)



F scale (Concert Eb)



Bb scale (Concert Ab)



Eb Scale (Concert Db)



D scale (Concert C)



A scale (Concert G)



Chromatic Scale

