

# ETSB&OA 11/12 Oboe

FINAL VERSION (no revisions)

Lyrical

Moderato

*mf*

*f*

*piu piano*

*mf*

*poco piu mosso*

*p* *mf*

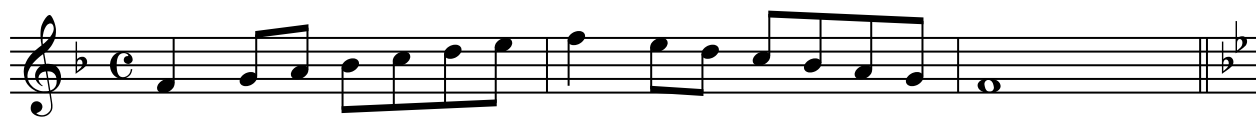
*piu lento* *dim. e rall.*

Technical

The image displays a technical musical exercise on five staves of music. The notation is in treble clef and common time (C). The first staff begins with a treble clef and a common time signature. The music is characterized by intricate rhythmic patterns, including sixteenth and thirty-second notes, often grouped with slurs and accents. The key signature is one sharp (F#), and the piece concludes with a double bar line. The second staff continues the melodic and rhythmic development. The third staff features a prominent slur over a series of notes, indicating a single breath or phrase. The fourth staff shows a continuation of the complex rhythmic motifs. The fifth staff concludes the piece with a final cadence and a double bar line.

# Oboe Scales 11-12

♩ = 120



Oboe Scales 11-12



\*Chromatic Scale should begin on the lowest note and end on the highest note of the scale sheet.