

Junior Clinic 2016

Cello

Fourth Movement Theme, New World Symphony

Antonin Dvorak

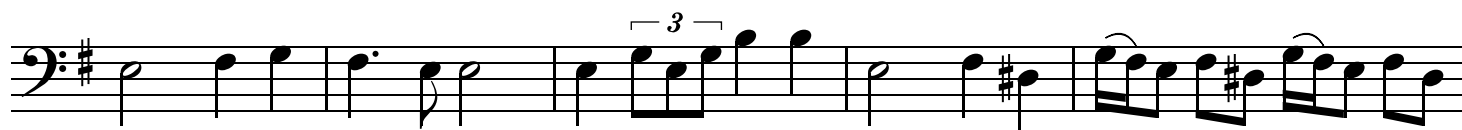
♩=100



7



13



18



Jr. Clinic Scales - Cello

G Major

Cello

The G Major scale is written on a bass clef staff in 4/4 time. The key signature has one sharp (F#). The scale consists of 14 notes: G2, A2, B2, C3, D3, E3, F#3, G3, A3, B3, C4, D4, E4, F#4. The notes are grouped into four measures of four notes each.

D Major

The D Major scale is written on a bass clef staff in 4/4 time. The key signature has two sharps (F# and C#). The scale consists of 14 notes: D2, E2, F#2, G2, A2, B2, C#3, D3, E3, F#3, G3, A3, B3, C#4. The notes are grouped into four measures of four notes each.

A Major

The A Major scale is written on a bass clef staff in 4/4 time. The key signature has three sharps (F#, C#, and G#). The scale consists of 14 notes: A2, B2, C#3, D3, E3, F#3, G#3, A3, B3, C#4, D4, E4, F#4, G#4. The notes are grouped into four measures of four notes each.

C Major

The C Major scale is written on a bass clef staff in 4/4 time. The key signature has no sharps or flats. The scale consists of 14 notes: C2, D2, E2, F2, G2, A2, B2, C3, D3, E3, F3, G3, A3, B3, C4. The notes are grouped into four measures of four notes each.

F Major

The F Major scale is written on a bass clef staff in 4/4 time. The key signature has one flat (Bb). The scale consists of 14 notes: F2, G2, A2, Bb2, C3, D3, E3, F3, G3, A3, Bb3, C4, D4, E4, F4. The notes are grouped into four measures of four notes each.

Bb Major

The Bb Major scale is written on a bass clef staff in 4/4 time. The key signature has two flats (Bb and Eb). The scale consists of 14 notes: Bb2, C3, D3, Eb3, F3, G3, Ab3, Bb3, C4, D4, Eb4, F4, G4, Ab4, Bb4. The notes are grouped into four measures of four notes each.