

11-12 lyrical B<sup>b</sup> clarinet + E<sup>b</sup> Clarinet

Adagio

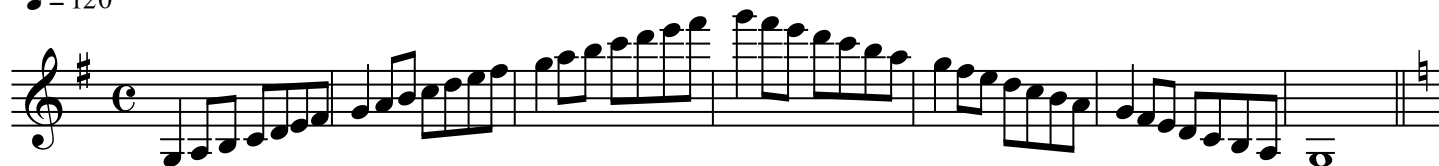
Musical score for Adagio section, measures 1-14. The music is written in treble clef with a key signature of two flats and a 3/4 time signature. It features a melodic line with various dynamics and articulations. The first measure is marked *dolce espress.*. Measures 2-4 show a *cresc.* (crescendo) leading to a *p* (piano) dynamic. Measure 5 is marked with a '5'. Measures 6-8 continue the melodic development. Measure 9 is marked with a '9' and a *cresc.*. Measure 10 is marked with an *f* (forte). Measure 11 is marked with an *f* and a sharp sign. Measure 12 is marked with an *f*. Measure 13 is marked with an *f*. Measure 14 is marked with a '14' and ends with a double bar line.

11-12 technical

Musical score for Allegretto section, measures 1-16. The music is written in treble clef with a key signature of two flats and a 12/16 time signature. It features a rhythmic, technical passage. The first measure is marked *mf* (mezzo-forte). The passage is characterized by sixteenth-note patterns and slurs. A star symbol is placed above a measure in the third staff. The section concludes with a *cresc.* (crescendo) leading to a *f* (forte) dynamic. The final measure is marked with a 'G' and a double bar line.

# Bb Clarinet Scales 11-12

♩ = 120



Bb Clarinet Scales 11-12

